

| | CAARA MEMBER | National Archives of Australia | State Records NSW | Public Record Office Victoria | Northern Territory Archives Service | Archives Office of Tasmania | State Records Office of Western Australia | State Records of South Australia | Queensland State Archives | Territory Records Office (ACT) | Archives New Zealand |
|--|---|--------------------------------|--------------------|-------------------------------|-------------------------------------|-----------------------------|---|----------------------------------|---------------------------|--------------------------------|--------------------------------|
| Holdings | | | | | | | | | | | |
| 1a | At the start of year - Archives (metres) | 362 936 | 65 919 | 88 337 | 5 281 | 17 701 | 14 859 | 70 864 | 42 977 | 13 556 | 93 420 |
| 1b | At the start of year - Total (items) | 36 293 600 | 10 415 202 | 139 957 246 | 834 398 | 2 652 001 | 2 361 166 | 11 196 512 | 1 246 333 | 595 706 | 6 200 000 |
| 2a | Accessions during year - Archives (metres) | 6 292 | 1 320 | 1 490 | 116 | 184 | 0 | 3 239 | 1 259 | 230 | 2 795 |
| 2b | Accessions during year - Total (items) | 629 200 | 208 560 | 235 420 | 18 328 | 34 110 | 0 | 511 762 | 73 838 | 11 483 | 313 422 |
| 3a | Disposal during the reporting period (metres) | 138 | 0 | 0 | 0 | 0 | 0 | 0 | 0 | 1 | 1 |
| 3b | Disposal during the reporting period- Total (items) | 138 000 | 0 | 0 | 0 | 0 | 0 | 0 | 0 | 66 | 332 |
| 4a | At end of year - Archives (metres) | 367 631 | 67 239 | 89 575 | 5 397 | 17 885 | 14 859 | 74 103 | 44 236 | 13 785 | 96 215 |
| 4b | At end of year - Archives (items) | 36 763 100 | 10 623 762 | 14 152 850 | 852 726 | 2 686 111 | 2 361 166 | 11 708 274 | 1 282 844 | 607 123 | 6 500 000 |
| 5 | Method of calculation for item count | Shelf metres x 100 | Shelf metres x 158 | Shelf metres x 158 | Shelf metres x 158 | Shelf metres x 158 | Shelf metres x 158 | Shelf metres x 158 | N/A | Shelf metres x 50 | Non-textual items counted only |
| Arrangement and Description | | | | | | | | | | | |
| Number of accessions or consignments processed and / or documented | | | | | | | | | | | |
| 6a | At the start of the reporting period | 90 508 | 3 586 | 21 672 | 4 600 | 17 725 | 7 450 | 39 273 | 21 975 | 0 | 4 610 |
| 6b | At the end of the reporting period | 91,439 | 4 104 | 22 096 | 4 707 | 18 281 | 7 450 | 40 171 | 22 051 | 0 | 4 690 |
| Number of items listed | | | | | | | | | | | |
| 7a | At the start of the reporting period | 9 066 272 | 269 832 | 5 615 522 | 70 238 | 676 810 | 615 450 | 759 246 | 1 275 515 | 0 | 5 121 840 |
| 7b | At the end of the reporting period | 9 442 202 | 306 393 | 5 761 050 | 87 984 | 710 920 | 690 571 | 932 872 | 1 416 134 | 0 | 5 435 262 |
| Number of series registered / described | | | | | | | | | | | |
| 8a | At the start of the reporting period | 66 755 | 14 941 | 16 119 | 3 647 | 17 007 | 4 150 | 21 749 | 16 640 | 0 | 27 690 |
| 8b | At the end of the reporting period | 66 987 | 15 282 | 16 368 | 3 735 | 18 682 | 4 462 | 22 411 | 17 012 | 0 | 29 951 |
| Number of context entities registered / described | | | | | | | | | | | |
| 9a | At the start of the reporting period | 9 065 | 3 887 | 4 710 | 1 042 | 4 336 | 1 588 | 2 859 | 5 011 | 0 | 6 118 |
| 9b | At the end of the reporting period | 9 121 | 4 257 | 4 764 | 1 194 | 4 572 | 1 649 | 2 974 | 5 446 | 0 | 6 389 |
| Proportion of archival records included in finding aids accessible to researchers (%) | | | | | | | | | | | |
| 10a | At the start of the reporting period | 98% | 99% | 81% | 95% | 96% | 98% | 0 | 86% | 0 | 78% |
| 10b | At the end of the reporting period | 98% | 99% | 82% | 95% | 97% | 98% | 0 | 87% | 0 | 85% |

| Reference services / Use of Holdings | | | | | | | | | | | |
|---|--|--------------|-------------|--------------|-------------|-------------|-------------|-------------|--------------|-----------|--------------|
| 11a | Visits to search room during year | 23 226 | 52 586 | 14 859 | 925 | 3 518 | 3 911 | 3 100 | 7 098 | 130 | 16 294 |
| 11b | Items made available in search room | 54 587 | 26 620 | 37 007 | 20 014 | 7 904 | 9 496 | 7 352 | 21 764 | 685 | 61 600 |
| 12a | Number of enquiries (except records creators/owners) | 70 668 | 11 389 | 15 259 | 665 | 6 185 | 7 226 | 4 756 | 24 246 | 160 | 15 978 |
| 12b | Number of archival records loaned to creators / owners other than in reading room or search room | 23 868 | 1 718 | 13 494 | 422 | 1 845 | 1 330 | 12 654 | 2 379 | 4 | 5 786 |
| Web Access | | | | | | | | | | | |
| 13a | Number of 'hits' during reporting period | 0 | 0 | 0 | 0 | 19 641 085 | 2 907 034 | 2 607 328 | 7 905 109 | 195 049 | 4 263 326 |
| 13b | Number of unique visits during reporting period | 5 394 006 | 1 594 946 | 1 008 175 | 0 | 628 700 | 114 151 | 108 115 | 458 858 | 6 117 | 373 171 |
| Information availability on web site | | | | | | | | | | | |
| 14a | Creators / owners (Yes/No) | Yes | Yes | Yes | Yes | Yes | Yes | Yes | Yes | No | Yes |
| 14b | Series (Yes/No) | Yes | Yes | Yes | Yes | Yes | Yes | Yes | Yes | No | Yes |
| 15a | Items (includes indexes) (Yes/No) | Yes | Yes | Yes | No | Yes | Yes | Yes | Yes | No | Yes |
| 15b | Digital copies (Yes/No) | Yes | Yes | Yes | No | Yes | Yes | No | Yes | No | Yes |
| Use of Holdings Percentage | | | | | | | | | | | |
| 16a | Business Users | 2% | 10% | 10% | 6% | 0 | 0 | 5% | 13% | 3% | 6% |
| 16b | Research Users | 98% | 90% | 90% | 94% | 0 | 0 | 95% | 87% | 97% | 94% |
| Repository buildings | | | | | | | | | | | |
| 17a | Total storage area - start of year (m ²) | 41 525 | 17 550 | 12 000 | 1 185 | 2 000 | 1 785 | 5 053 | 12 650 | 3 000 | 16 135 |
| 17b | Total storage area - end of year (m ²) | 41 525 | 17 550 | 12 000 | 1 185 | 2 000 | 1 785 | 5 053 | 12 650 | 3 000 | 16 135 |
| 18a | Shelving capacity - start of year (metres) | 448 070 | 143 600 | 112 500 | 7 054 | 18 651 | 14 600 | 75 000 | 93 000 | 249.6 | 156 760 |
| 18b | Shelving capacity - end of year (metres) | 400 725 | 143 600 | 112 500 | 7 054 | 18 651 | 14 600 | 75 000 | 93 000 | 249.6 | 156 760 |
| Staff | | | | | | | | | | | |
| 19a | FTE positions filled - start of year | 441.24 | 61.28 | 76 | 13 | 25 | 22 | 27.1 | 59 | 7 | 147 |
| 19b | FTE positions filled - end of year | 429.55 | 66.31 | 75 | 11 | 30.6 | 22 | 27.1 | 59 | 5 | 138 |
| Budget and Expenditure | | | | | | | | | | | |
| 20a | Total expenditure during year (\$A) | \$72 858 000 | \$8 309 887 | \$14 394 732 | \$1 493 000 | \$2 821 000 | \$1 740 068 | \$4 318 750 | \$18 285 000 | \$897 736 | \$23 219 000 |
| 20b | Does expenditure include accommodation (Yes/No) | Yes | Yes | Yes | No | Yes | No | Yes | Yes | Yes | Yes |

| Income | | | | | | | | | | | |
|--------|---|------|-----|-----|------|-----|-----|-----|-----|------|-----|
| 21a | Recurrent / Operating (Yes/No) | Yes | Yes | Yes | Yes | Yes | Yes | Yes | Yes | Yes | Yes |
| 21b | Proportion of funding (%) | 57% | 88% | 58% | 100% | 99% | 96% | 97% | 96% | 100% | 98% |
| 22a | Capital / Building and equipment (Yes/No) | Yes | Yes | Yes | No | No | No | Yes | Yes | No | No |
| 22b | Proportion of funding (%) | 21% | 5% | 33% | 0 | 0% | 0% | 1% | 3% | 0% | 0% |
| 23a | Earnings (Yes/No) | Yes | Yes | Yes | No | Yes | Yes | Yes | Yes | No | Yes |
| 23b | Proportion of funding (%) | 22% | 4% | 3% | 0 | 1% | 4% | 2% | 1% | 0% | 2% |
| 24a | Sponsorships (Yes/No) | Yes | No | Yes | No | No | No | No | No | No | No |
| 24b | Proportion of funding (%) | 0.25 | 0% | 0% | 0 | 0% | 0% | 0% | 0% | 0% | 0% |
| 25a | Grants (Yes/No) | No | Yes | Yes | No | No | No | No | No | No | No |
| 25b | Proportion in funding (%) | 0% | 3% | 6% | 0 | 0% | 0% | 0# | 0% | 0% | 0% |

Notes

State Records NSW

Q1, 4: This includes state archives stored outside State Records custody.

Q6b: These are registered consignments (draft and approved).

Q6-9: These figures record registrations in the current electronic system only. Accessions processed under the previous system will be brought forward into the current system as time permits.

Q10: Includes paper-based documentation.

Q11a: Includes 5,602 readers using original items.

Q12a: This figure is a total for the number of enquiries received by telephone and in writing only. State Records NSW does not keep statistics on the number of enquiries received in person in the reading rooms.

Public Record Office Victoria

Q1b: There were also 244,995 VERS encapsulated objects in addition to the total number of physical items recorded.

Q4b: There were also 313,269 VERS encapsulated objects in addition to the total number of physical items recorded.

Q12a: Statistics were not kept for enquiries received in person. This figure is derived from % of users in reading room plus telephone, correspondence and email enquiries. Figure is higher than in previous years due to change in recording methods.

Q13a: PROV's analytics application (Google Analytics) does not measure web site 'hits'.

Q13b: This figure represents total number of visits, not unique visits.

Archives Office of Tasmania

Q9b: 1,829 (Government); 2,743 (Non_Government)

State Records of South Australia

Q7a: This quantity represents only those items listed electronically in State Records (SA) Archival Management System, ArchivesOne. The quantity of items listed in hardcopy is not available.

Q7b: This quantity represents only those items listed electronically in State Records (SA) Archival Management System, ArchivesOne. The quantity of items listed in hardcopy is not available.

Queensland State Archives

Q1a: Adjusted to reflect more accurate figures.

Q7a: Includes children.

Archives New Zealand

Q4b: 4 288 570 are currently described on Archway. This excludes items not listed individually such as photographic prints and negatives. Estimates have been made for these types of archives including 750 000 maps/plans, 500 000 prints and negatives and

| | | | | | | | | | | | | | | | Variation 1996/2009 | Percentage variation 1996/2009 | Variation 2009/2010 | Percentage variation 2009/2010 |
|-----------------|---------------|---------------|---------------|---------------|---------------|---------------|---------------|---------------|---------------|---------------|---------------|---------------|----------------|----------------|------------------------|--------------------------------------|------------------------|--------------------------------------|
| Holdings | | | | | | | | | | | | | | | | | | |
| | 1996 | 1997 | 1998 | 1999 | 2000 | 2001 | 2002 | 2003 | 2004 | 2005 | 2006 | 2007 | 2008 | 2009 | | | | |
| National | 197363 | 217278 | 238254 | 249308 | 255895 | 292399 | 366193 | 264576 | 270399 | 276233 | 297249 | 300350 | 306,865 | 367 631 | 109,502 | 55.48% | 6,515 | 2.17% |
| VIC | 28233 | 32927 | 38567 | 40909 | 50448 | 45396 | 57739 | 82227 | 83547 | 84192 | 85355 | 86004 | 87,365 | 89 575 | 59,132 | 209.44% | 1,361 | 1.58% |
| NSW | 42516 | 43500 | 43892 | 44455 | 47105 | 58262 | 49655 | 53081 | 54591 | 57096 | 57667 | 58516 | 59,842 | 67 239 | 17,326 | 40.75% | 1,326 | 2.27% |
| QLD | 24211 | 24687 | 25647 | 26361 | 26639 | 34068 | 34556 | 34924 | 35083 | 35424 | 35909 | 36835 | 40,285 | 44 236 | 16,074 | 66.39% | 3,450 | 9.37% |
| SA | 0 | 0 | 15430 | 16575 | 0 | 40000 | 44969 | 50221 | 51650 | 53866 | 64415 | 66255 | 67,832 | 74 103 | 52,402 | 380.22% | 1,577 | 2.38% |
| WA | 9279 | 8335 | 8740 | 9033 | 9313 | 9831 | 10235 | 14674 | 14855 | 14855 | 14857 | 14859 | 0 | 14 859 | -9,279 | -100.00% | -14,859 | -100.00% |
| TAS | 0 | 15700 | 16143 | 16460 | 16990 | 15698 | 16002 | 16706 | 16784 | 17359 | 17449 | 17487 | 17,850 | 17 885 | 2,150 | N/A | 363 | 2.08% |
| NT | 3228 | 3244 | 3244 | 3326 | 3326 | 3326 | 3874 | 4306 | 4443 | 4529 | 4974 | 5116 | 5179 | 5 397 | 1,951 | 60.44% | 63 | 1.23% |
| ACT | | | | | | | | | 5100 | 5100 | 3897 | 3369 | 11,783 | 13 785 | 11,783 | 231.04% | 8,414 | 249.75% |
| NZ | 66624 | 64110 | 69369 | 70232 | 73173 | 0 | 77500 | 79068 | 82214 | 83864 | 85481 | 86819 | 89,628 | 96 215 | 23,004 | 34.53% | 2,809 | 3.24% |
| TOTAL | 371454 | 409781 | 459286 | 476659 | 482889 | 498980 | 660723 | 599783 | 618666 | 632518 | 667253 | 675610 | 686,629 | 776 076 | 315,175 | 84.85% | 11,019 | 1.63% |

| | | | | | | | | | | | | | | Variation 1996/2009 | Percentage variation 1996/2009 | Variation 2009/2010 | Percentage variation 2009/2010 | |
|-----------------------------|---------------|---------------|---------------|---------------|---------------|---------------|---------------|---------------|---------------|---------------|---------------|---------------|----------------|------------------------|--------------------------------------|------------------------|--------------------------------------|----------------|
| Reference Services | | | | | | | | | | | | | | | | | | |
| <i>Items Made Available</i> | | | | | | | | | | | | | | | | | | |
| | 1996 | 1997 | 1998 | 1999 | 2000 | 2001 | 2002 | 2003 | 2004 | 2005 | 2006 | 2007 | 2008 | 2009 | | | | |
| National | 62167 | 61706 | 68443 | 71783 | 68228 | 57827 | 62684 | 49449 | 55003 | 57892 | 51851 | 50724 | 58,171 | 54 587 | -3,996 | -6.43% | 7,447 | 14.68% |
| VIC | 49615 | 50210 | 49569 | 48962 | 53662 | 60571 | 57598 | 57604 | 53370 | 46796 | 49906 | 49633 | 48,294 | 37 007 | -1,321 | -2.66% | -1,339 | -2.70% |
| NSW | 107985 | 104516 | 99248 | 89156 | 22115 | 24335 | 21516 | 30834 | 25725 | 28232 | 28090 | 25640 | 26,831 | 26 620 | -81,154 | -75.15% | 1,191 | 4.65% |
| QLD | 27326 | 27634 | 27730 | 21762 | 32612 | 31179 | 30700 | 26940 | 35483 | 28285 | 33349 | 31504 | 16,084 | 21 764 | -11,242 | -41.14% | -15,420 | -48.95% |
| SA | 17674 | 18561 | 16677 | 19271 | 0 | 15468 | 10690 | 16313 | 5000 | 6414 | 6845 | 8062 | 8,794 | 7 352 | -8,880 | -50.24% | 732 | 9.08% |
| WA | 19961 | 17495 | 18021 | 20154 | 19248 | 9788 | 8901 | 8972 | 7835 | 6874 | 7380 | 6962 | 9 853 | 9 496 | -10,465 | -52.43% | -357 | -5.13% |
| TAS | 28745 | 27500 | 26350 | 27000 | 27000 | 29500 | 28820 | 29500 | 30400 | 27100 | 18869 | 27519 | 7,494 | 7 904 | -21,251 | -73.93% | -20,025 | -72.77% |
| NT | 5129 | 3818 | 8871 | 8776 | 3600 | 10321 | 29376 | 16222 | 50856 | 31820 | 43653 | 48957 | 20,624 | 20 014 | 15,495 | 302.11% | -28,333 | -57.87% |
| ACT | | | | | | | | 0 | 0 | 0 | 0 | 0 | 199 | 685 | 199 | 0.00% | 199 | 0.00% |
| NZ | 54947 | 54883 | 53678 | 51442 | 53454 | 0 | 48893 | 51096 | 51772 | 51016 | 50149 | 55771 | 57,964 | 61 600 | 3,017 | 5.49% | 2,193 | 3.93% |
| TOTAL | 373549 | 366323 | 368587 | 358306 | 279919 | 238989 | 299178 | 286930 | 315444 | 284429 | 290092 | 304772 | 244,455 | 685 | -129,094 | -34.56% | -60,317 | -19.79% |

| | | | | | | | | | | | | | | Variation 1996/2009 | Percentage variation 1996/2009 | Variation 2009/2010 | Percentage variation 2009/2010 | |
|------------------------------|---------------|---------------|---------------|---------------|---------------|--------------|--------------|--------------|--------------|--------------|---------------|---------------|----------------|------------------------|--------------------------------------|------------------------|--------------------------------------|---------------|
| Reference Services | | | | | | | | | | | | | | | | | | |
| <i>Visits To Search Room</i> | | | | | | | | | | | | | | | | | | |
| | 1996 | 1997 | 1998 | 1999 | 2000 | 2001 | 2002 | 2003 | 2004 | 2005 | 2006 | 2007 | 2008 | 2009 | | | | |
| National | 14120 | 16022 | 16149 | 25313 | 24574 | 24815 | 24392 | 24090 | 25332 | 22660 | 22040 | 20967 | 22,879 | 23 226 | 8,759 | 62.03% | 1,912 | 9.12% |
| VIC | 29799 | 27614 | 25951 | 23633 | 22315 | 22633 | 23194 | 21815 | 19461 | 19175 | 18648 | 17083 | 17,278 | 14 859 | -12,521 | -42.02% | 195 | 1.14% |
| NSW | 16595 | 15121 | 14488 | 14078 | 12401 | 4117 | 3966 | 5333 | 5544 | 5959 | 57615 | 61405 | 54,467 | 52 586 | 37,872 | 228.21% | -6,938 | -11.30% |
| QLD | 9158 | 9815 | 9470 | 9892 | 9697 | 9433 | 8768 | 8842 | 8842 | 8255 | 6845 | 6856 | 6,078 | 7 098 | -3,080 | -33.63% | -778 | -11.35% |
| SA | 3802 | 3551 | 3499 | 3687 | 0 | 4291 | 3811 | 3441 | 2060 | 1996 | 2513 | 2796 | 3,270 | 3 100 | -532 | -13.99% | 474 | 16.95% |
| WA | 8662 | 8997 | 9566 | 8260 | 8676 | 5536 | 5917 | 5384 | 4265 | 3657 | 3429 | 3562 | 4 258 | 3 911 | -4,752 | -54.86% | -347 | -9.74% |
| TAS | 10450 | 10340 | 10670 | 10560 | 10998 | 10900 | 10629 | 10300 | 9950 | 9240 | 7715 | 7792 | 4,178 | 3 518 | -6,272 | -60.02% | -3,614 | -46.38% |
| NT | 608 | 500 | 539 | 582 | 610 | 676 | 843 | 748 | 804 | 760 | 1010 | 907 | 934 | 925 | 326 | 53.62% | 27 | 2.98% |
| ACT | | | | | | | | 0 | 0 | 0 | 0 | 0 | 45 | 130 | 45 | 0.00% | 45 | 0.00% |
| NZ | 18137 | 17331 | 17118 | 18527 | 19463 | 0 | 15256 | 16724 | 16630 | 15178 | 15801 | 16619 | 17,019 | 16 294 | -1,118 | -6.16% | 400 | 2.41% |
| TOTAL | 111331 | 109291 | 107450 | 114532 | 108734 | 82401 | 96776 | 96677 | 92888 | 86880 | 135616 | 137987 | 126,148 | 1,055 | 14,817 | 13.31% | -11,839 | -8.58% |

| | | | | | | | | | | | | | | | Variation 1996/2009 | Percentage variation 1996/2009 | Variation 2009/2010 | Percentage variation 2009/2010 |
|---------------------------|--------------|---------------|---------------|---------------|---------------|---------------|---------------|---------------|---------------|---------------|---------------|---------------|----------------|------------|------------------------|--------------------------------------|------------------------|--------------------------------------|
| Reference Services | | | | | | | | | | | | | | | | | | |
| <i>Enquiries Recorded</i> | | | | | | | | | | | | | | | | | | |
| | 1996 | 1997 | 1998 | 1999 | 2000 | 2001 | 2002 | 2003 | 2004 | 2005 | 2006 | 2007 | 2008 | 2009 | | | | |
| National | 41621 | 46400 | 49852 | 70293 | 73846 | 72991 | 115877 | 147790 | 134866 | 142897 | 116953 | 103362 | 75,474 | 70 668 | 33,853 | 81.34% | -27,888 | -26.98% |
| VIC | 0 | 58577 | 59287 | 50536 | 47578 | 47042 | 54431 | 55319 | 53621 | 47016 | 18148 | 17732 | 17,595 | 15 259 | 17,595 | 72.96% | -137 | -0.77% |
| NSW | 7984 | 9099 | 7739 | 10429 | 10752 | 10803 | 11688 | 13000 | 9788 | 9400 | 9554 | 10928 | 10,805 | 11 389 | 2,821 | 35.33% | -123 | -1.13% |
| QLD | 10251 | 21292 | 4400 | 16101 | 20502 | 3953 | 2891 | 21447 | 21447 | 22782 | 19324 | 20893 | 16,026 | 24 246 | 5,775 | 56.34% | -4,867 | -23.29% |
| SA | 14209 | 15123 | 15768 | 5306 | 0 | 6690 | 7077 | 0 | 4800 | 1645 | 1542 | 1478 | 4,150 | 4 756 | -10,059 | -70.79% | 2,672 | 180.78% |
| WA | 8665 | 9948 | 10743 | 11391 | 12104 | 12720 | 10734 | 9635 | 7435 | 7197 | 8863 | 6540 | 7 269 | 7 226 | -1,439 | -16.61% | -43 | -0.66% |
| TAS | 1900 | 1870 | 2556 | 3068 | 3630 | 4500 | 2664 | 2721 | 2790 | 2640 | 2822 | 2894 | 4,151 | 6 185 | 2,251 | 118.47% | 1,257 | 43.43% |
| NT | 98 | 103 | 87 | 689 | 453 | 119 | 333 | 426 | 441 | 452 | 665 | 633 | 706 | 665 | 608 | 620.41% | 73 | 11.53% |
| ACT | | | | | | | | 0 | 0 | 0 | 0 | 0 | 0 | 160 | 0 | 0.00% | 0 | 0.00% |
| NZ | 4647 | 4675 | 5420 | 7542 | 16824 | 0 | 30953 | 30701 | 32117 | 30551 | 9547 | 11249 | 12,114 | 15 978 | 7,467 | 160.68% | 865 | 7.69% |
| TOTAL | 89375 | 167087 | 155852 | 175355 | 185689 | 158818 | 236648 | 281039 | 267305 | 264580 | 187418 | 175709 | 141,021 | 825 | 51,646 | 57.79% | -34,688 | -19.74% |

| | | | | | | | | | | | | | | | Variation 1996/2009 | Percentage variation 1996/2009 | Variation 2009/2010 | Percentage variation 2009/2010 |
|--------------|--------------|--------------|--------------|--------------|------------|------------|--------------|--------------|--------------|--------------|--------------|--------------|---------------|--------------|------------------------|--------------------------------------|------------------------|--------------------------------------|
| Staff | | | | | | | | | | | | | | | | | | |
| | 1996 | 1997 | 1998 | 1999 | 2000 | 2001 | 2002 | 2003 | 2004 | 2005 | 2006 | 2007 | 2008 | 2009 | | | | |
| National | 371.0 | 344.0 | 336.0 | 315.0 | 335.0 | 325.0 | 368.0 | 419.0 | 421.5 | 447.0 | 402.0 | 397.0 | 441.2 | 429.6 | 70.2 | 18.93% | 44.2 | 11.14% |
| VIC | 42.0 | 43.0 | 43.0 | 43.0 | 69.0 | 57.0 | 55.1 | 51.0 | 52.7 | 53.0 | 58.7 | 60.0 | 76.0 | 75.0 | 34.0 | 80.95% | 16.0 | 26.67% |
| NSW | 88.0 | 95.0 | 99.0 | 105.0 | 105.0 | 105.0 | 60+ | 54.0 | 54.7 | 55.8 | 60.4 | 61.9 | 61.3 | 66.3 | -26.7 | -30.36% | -0.6 | -1.00% |
| QLD | 58.0 | 61.0 | 53.0 | 40.0 | 52.0 | 34.0 | 34.0 | 42.0 | 41.0 | 51.0 | 46.0 | 47.0 | 57.0 | 59.0 | -1.0 | -1.72% | 10.0 | 21.28% |
| SA | 24.0 | 21.0 | 23.0 | 28.0 | 0.0 | 33.0 | 35.8 | 41.9 | 36.7 | 42.6 | 41.3 | 40.8 | 27.1 | 27.1 | 3.1 | 12.92% | -13.7 | -33.58% |
| WA | 15.0 | 16.0 | 16.0 | 16.0 | 16.0 | 16.0 | 16.5 | 18.9 | 20.0 | 20.0 | 10.0 | 10.0 | 22.0 | 22.0 | 7.0 | 46.67% | 12.0 | 120.00% |
| TAS | 25.0 | 25.0 | 25.0 | 25.0 | 25.0 | 25.0 | 25.0 | 25.0 | 25.0 | 25.0 | 25.0 | 25.0 | 25.0 | 30.6 | 0.0 | 0.00% | 0.0 | 0.00% |
| NT | 9.0 | 9.0 | 9.0 | 9.0 | 13.0 | 13.0 | 13.0 | 14.0 | 17.0 | 20.0 | 19.0 | 20.0 | 13.0 | 11.0 | 4.0 | 44.44% | -7.0 | -35.00% |
| ACT | | | | | | | | 2.0 | 5.0 | 6.0 | 6.0 | 6.0 | 7.0 | 5.0 | 7.0 | 0.00% | 1.0 | 16.67% |
| NZ | 73.5 | 71.8 | 69.7 | 68.5 | 70.0 | 0.0 | 96.0 | 107.0 | 112.0 | 117.0 | 100.0 | 109.0 | 147.0 | 138.0 | 73.5 | 100.00% | 38.0 | 34.86% |
| TOTAL | 705.5 | 685.8 | 673.7 | 649.5 | 685 | 608 | 643.4 | 774.8 | 785.6 | 837.4 | 768.4 | 776.7 | 876.62 | 863.6 | 171.1 | 24.26% | 99.9 | 12.86% |

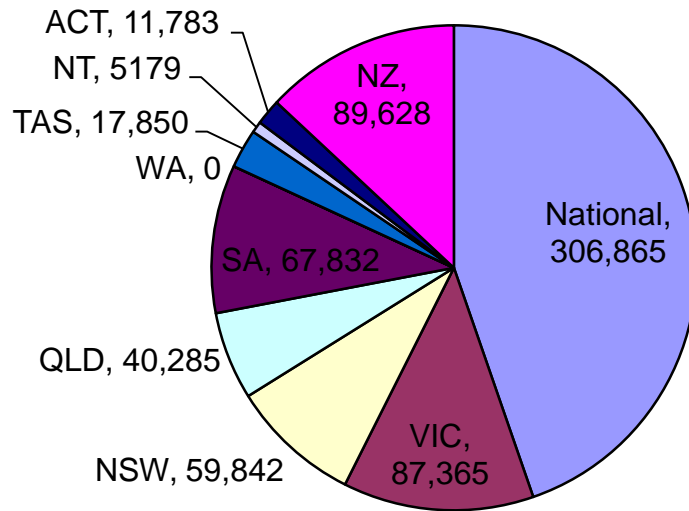
| | | | | | | | | | | Variation 2001/2009 | Percentage variation 2001/2009 | Variation 2009/2010 | Percentage variation 2009/2010 |
|-------------------|----------------|-----------------|-----------------|------------------|------------------|-----------------|-----------------|-------------------|-------------------|---------------------|--------------------------------|---------------------|--------------------------------|
| Web Access | | | | | | | | | | | | | |
| <i>Hits*</i> | | | | | | | | | | | | | |
| | 2001 | 2002 | 2003 | 2004 | 2005 | 2006 | 2007 | 2008 | 2009 | | | | |
| National | 2897900 | 38600000 | 59382836 | 92678966 | 105751748 | 0 | 0 | 0 | 0 | 0 | 0 | 0.0 | 0.00% |
| VIC | 627600 | 10322161 | 15015873 | 7168286 | 7494500 | 0 | 0 | 0 | 0 | 0 | 0 | 0.0 | 0.00% |
| NSW | 473704 | 596334 | 0 | 14300105 | 18131817 | 23516200 | 21827453 | 0 | 0 | 0 | 0.00% | 0.0 | 0.00% |
| QLD | 9852 | 65484 | 920569 | 2006828 | 4284437 | 4781244 | 5453576 | 7,639,291 | 7,905,109 | 7,895,257 | 80.13% | 265 818 | 3.47% |
| SA | 165946 | 75126 | 73328 | 0 | 0 | 5355292 | 3840538 | 25,784,148 | 2,607,328 | 2,441,382 | 1471.19% | | |
| WA | 0 | 0 | 361008 | 463679 | 545112 | 0 | 2437681 | 2 475 397 | 2 907 034 | 2 907 034 | 0.00% | 431 637 | 1.74% |
| TAS | 850000 | 2220000 | 2668844 | 2157280 | 3110359 | 4946372 | 13179754 | 32,346,885 | 19,641,085 | 18,791,085 | 2210.71% | 19,167,131.0 | 145.43% |
| NT | 0 | 0 | 0 | 0 | 0 | 0 | 0 | 0 | 0 | 0 | 0.00% | 0.0 | 0.00% |
| ACT | 0 | 0 | 0 | 0 | 0 | 0 | 0 | 172239 | 195049 | 195 049 | 0.00% | 22 810 | 13.24% |
| NZ | 0 | 1122299 | 1047612 | 181840 | 0 | 0 | 8221 | 3,611,703 | 17,421,085 | 17 421 085 | 0.00% | 13 809 382 | 382.35% |
| TOTAL | 5025002 | 53001404 | 79470070 | 118956984 | 139317973 | 38599108 | 46747223 | 69,554,266 | 47,769,656 | 29,127,724 | 3762% | 22,807,043.0 | 48.79% |

| | | | | | | | | | | Variation 2001/2009 | Percentage variation 2001/2008 | Variation 2009/2010 | Percentage variation 2009/2010 |
|-----------------------|----------------|----------------|----------------|----------------|----------------|----------------|----------------|------------------|-----------|---------------------|--------------------------------|---------------------|--------------------------------|
| Web Access | | | | | | | | | | | | | |
| <i>Unique visits*</i> | | | | | | | | | | | | | |
| | 2001 | 2002 | 2003 | 2004 | 2005 | 2006 | 2007 | 2008 | 2009 | | | | |
| National | 581072 | 2190329 | 3011606 | 4725177 | 5895999 | 4060445 | 5541789 | 3,329,851 | 5 394 006 | 2,748,779 | 473.05% | -2,211,938.0 | -39.91% |
| VIC | 218600 | 282000 | 322061 | 364332 | 43900 | 460012 | 588760 | 1,243,945 | 1 008 175 | 1,025,345 | 469.05% | 655,185.0 | 111.28% |
| NSW | 0 | 0 | 903645 | 1039248 | 1376324 | 1513126 | 976382 | 1 598 503 | 1 594 946 | 1 594 946 | 0.00% | -3,557.0 | -0.36% |
| QLD | 25956 | 53460 | 30444 | 75089 | 102106 | 141865 | 328613 | 382,402 | 458 858 | 356,446 | 1373.27% | 53,789.0 | 16.37% |
| SA | 11122 | 24575 | 7775 | 0 | 0 | 117460 | 80877 | 100,274 | 108 115 | 89,152 | 801.58% | 19,397.0 | 23.98% |
| WA | 0 | 0 | 35137 | 53504 | 119134 | 0 | 84025 | 96 835 | 114 151 | 114 151 | 0.00% | 17,136.0 | 20.39% |
| TAS | 164000 | 279600 | 0 | 0 | 141484 | 0 | 0 | 1,152,248 | 628 700 | 988,248 | 602.59% | -523,548.0 | -45.43% |
| NT | 0 | 0 | 0 | 0 | 0 | 0 | 0 | 0 | 0 | 0 | 0.00% | 0.0 | 0.00% |
| ACT | | | 0 | 0 | 0 | 0 | 0 | 3889 | 6 117 | 6 117 | 0.00% | 2,228.0 | 57.28% |
| NZ | 0 | 73612 | 132 256 | 92906 | 0 | 0 | 5005 | 244,679 | 373 171 | 373 171 | 0.00% | 239,674.0 | 4788.69% |
| TOTAL | 1000750 | 2903576 | 4310668 | 6350256 | 7678947 | 6292909 | 7605451 | 6,457,288 | 0 | 5,456,538 | 545.24% | -1,148,163.0 | -15.10% |

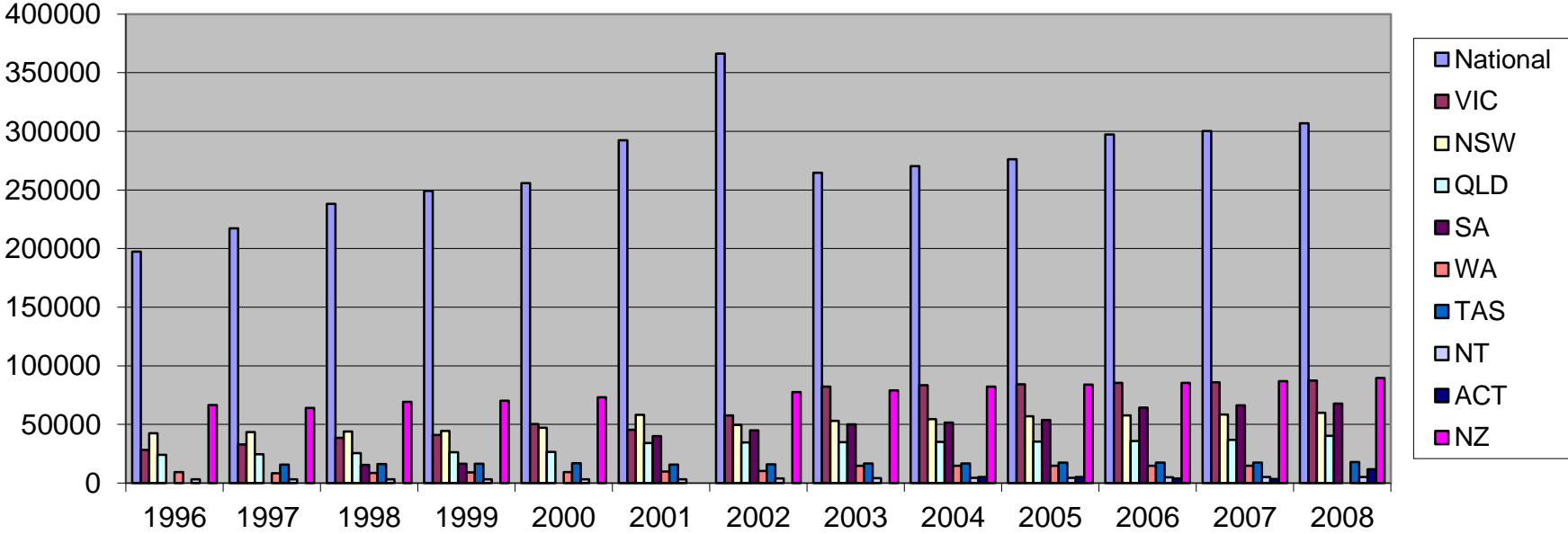
| | | | | | | | | | | | | | | Variation 1996/2009 | Percentage variation 1996/2009 | Variation 2009/2010 | Percentage variation 2009/2010 | |
|----------------------------|---------------|---------------|---------------|---------------|--------------|---------------|---------------|---------------|--------------|--------------|--------------|--------------|----------------|------------------------|--------------------------------------|------------------------|--------------------------------------|---------------|
| Repository Building | | | | | | | | | | | | | | | | | | |
| <i>Total Storage Area</i> | | | | | | | | | | | | | | | | | | |
| | 1996 | 1997 | 1998 | 1999 | 2000 | 2001 | 2002 | 2003 | 2004 | 2005 | 2006 | 2007 | 2008 | 2009 | | | | |
| National | 74999 | 74999 | 71288 | 69031 | 54816 | 75073 | 72068 | 46258 | 40706 | 40396 | 41525 | 41525 | 41,525 | 41 525 | -33,474 | -44.63% | 0 | 0.00% |
| VIC | 0 | 0 | 10000 | 10000 | 10000 | 10000 | 9444 | 9444 | 11876 | 11876 | 11876 | 11876 | 12,000 | 12 000 | 12,000 | 0.00% | 124 | 1.04% |
| NSW | 18586 | 19586 | 27000 | 27000 | 10000 | 19370 | 17550 | 17550 | 17550 | 17550 | 17550 | 17550 | 17,550 | 17 550 | -1,036 | -5.57% | 0 | 0.00% |
| QLD | 5698 | 5698 | 6260 | 6260 | 6260 | 6260 | 6260 | 6260 | 6260 | 6260 | 6260 | 6260 | 12,650 | 12 650 | 6,952 | 122.01% | 6,390 | 102.08% |
| SA | 3720 | 3720 | 4210 | 5048 | 0 | 6778 | 6778 | 6778 | 6778 | 5053 | 5053 | 5053 | 5,053 | 5 053 | 1,333 | 35.83% | 0 | 0.00% |
| WA | 2585 | 2585 | 2585 | 2585 | 2585 | 1785 | 1785 | 1785 | 1785 | 1785 | 1785 | 1785 | 1 785 | 1 785 | -800 | -30.95% | 0 | 0.00% |
| TAS | 2000 | 2000 | 2000 | 2000 | 2000 | 2000 | 2000 | 2000 | 2000 | 2000 | 2000 | 2000 | 2,000 | 2 000 | 0 | 0.00% | 0 | 0.00% |
| NT | 1000 | 1000 | 1000 | 1000 | 1000 | 1121 | 1121 | 1121 | 1142 | 1142 | 1185 | 1185 | 1,185 | 1 185 | 185 | 18.50% | 0 | 0.00% |
| ACT | | | | | | | | 0 | 0 | 0 | 0 | 0 | 3000 | 3 000 | 3,000 | 0.00% | 3,000 | 0.00% |
| NZ | 0 | 5000 | 5000 | 6681 | 10456 | 0 | 10456 | 10456 | 10456 | 10456 | 10340 | 10340 | 16,135 | 16 135 | 16,135 | 0.00% | 5,795 | 56.04% |
| TOTAL | 108588 | 114588 | 129343 | 129605 | 97117 | 122387 | 127462 | 101652 | 98553 | 96136 | 97574 | 97574 | 111,098 | 0 | 2,510 | 2.31% | 13,524 | 13.86% |

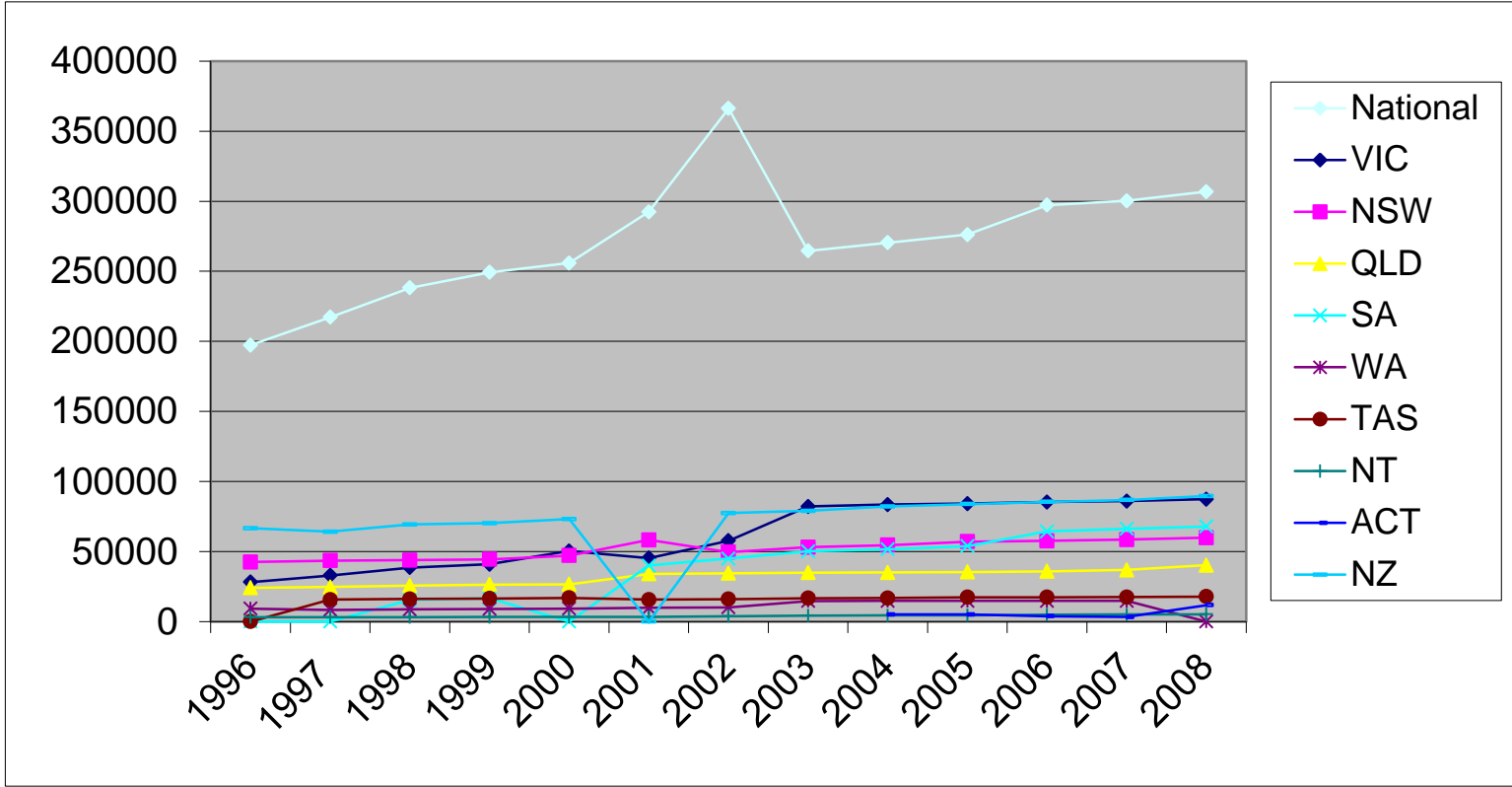
| Holdings | | | | | | | | | | | | | | Variation 1996/2009 | Percentage variation 1996/2009 | Variation 2009/2010 | Percentage variation 2009/2010 | | | |
|--------------|---------------|---------------|---------------|---------------|---------------|---------------|---------------|---------------|---------------|---------------|---------------|---------------|----------------|------------------------|--------------------------------------|------------------------|--------------------------------------|----------------|---------------|---------------|
| | 1996 | 1997 | 1998 | 1999 | 2000 | 2001 | 2002 | 2003 | 2004 | 2005 | 2006 | 2007 | 2008 | 2009 | Staff | Smstaff | | | | |
| National | 197363 | 217278 | 238254 | 249308 | 255895 | 282399 | 366193 | 264576 | 270399 | 276233 | 297249 | 300350 | 362,936 | 367 631 | 441 | 823 | 165,573 | 83.89% | 62,586 | 20.84% |
| VIC | 28233 | 32927 | 38567 | 40909 | 50448 | 45396 | 57739 | 82227 | 83547 | 84192 | 85355 | 86004 | 88,337 | 89 575 | 76 | 1,162 | 60,104 | 212.89% | 2,333 | 2.71% |
| NSW | 42516 | 43500 | 43892 | 44455 | 47105 | 58262 | 49655 | 53081 | 54591 | 57096 | 57667 | 58516 | 65,919 | 67 239 | 61 | 1,076 | 23,403 | 55.05% | 7,403 | 12.65% |
| QLD | 24211 | 24687 | 25647 | 26361 | 26639 | 34068 | 34556 | 34924 | 35083 | 35424 | 35909 | 36835 | 42,977 | 44 236 | 57 | 754 | 18,766 | 77.51% | 6,142 | 16.67% |
| SA | N/A | N/A | 15430 | 16575 | N/A | 40000 | 44969 | 50221 | 51650 | 53866 | 64415 | 66255 | 70,864 | 74 103 | 27 | 2,615 | 70,864 | 0.00% | 4,609 | 6.96% |
| WA | 9279 | 8335 | 8740 | 9033 | 9313 | 9831 | 10235 | 14674 | 14855 | 14855 | 14857 | 14859 | 14,859 | 14 859 | 22 | 675 | 5,546 | 59.77% | 0 | 0.00% |
| TAS | N/A | 15700 | 16143 | 16460 | 16990 | 15698 | 16002 | 16706 | 16784 | 17359 | 17449 | 17487 | 17,885 | 17 885 | 25 | 715 | 17,885 | 0.00% | 398 | 2.28% |
| NT | 3228 | 3244 | 3244 | 3326 | 3326 | 3326 | 3874 | 4306 | 4443 | 4529 | 4974 | 5116 | 5397 | 5 397 | 13 | 415 | 2,169 | 67.19% | 281 | 5.49% |
| ACT | 66624 | 64110 | 69369 | 70232 | 73173 | N/A | 77500 | 79068 | 82214 | 83864 | 85481 | 86819 | 95,915 | 96 215 | 147 | 1,969 | 13,785 | 0.00% | 0 | 0.00% |
| NZ | | | | | | | | | | | | | | | | | | | | |
| TOTAL | 371454 | 409781 | 459286 | 476659 | 482889 | 498980 | 660723 | 599783 | 618666 | 632518 | 667253 | 675610 | 765,015 | | 877 | 873 | 393,561 | 105.95% | 89,405 | 13.23% |

Holdings 2010

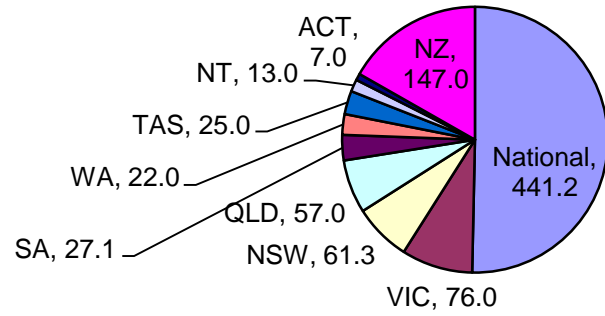


Holdings 1996-2010

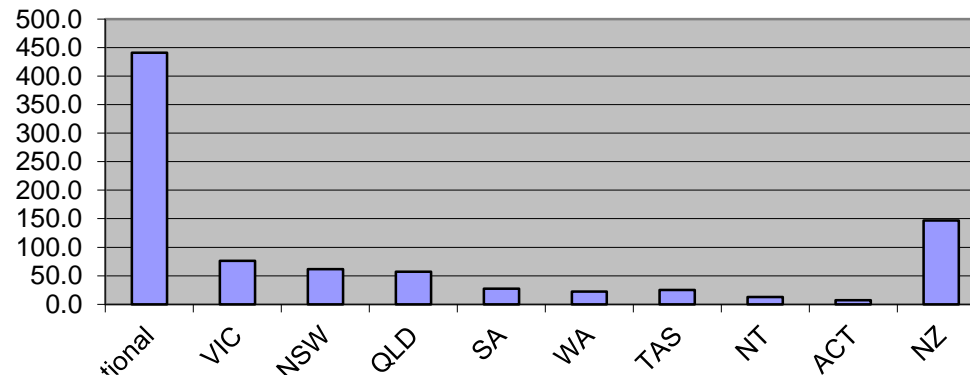




Staff



Staffing 2009



|

Nat.

,

.

|