

	CAARA MEMBER	National Archives of Australia	State Records NSW	Public Record Office Victoria	Northern Territory Archives Service	Archives Office of Tasmania	State Records Office of Western	State Records of South Australia	Queensland State Archives	Territory Records Office (ACT)	Archives New Zealand
Holdings											
1a	At the start of year - Archives (metres)	306 865	59 842	87 365	5 179	17 850	14 859	67 832	^{40 285 Note} 5	11 783	89 628
1b	At the start of year - Total (items)	30 686 500	9 455 036	13 803 670	818 282	2 628 054	2 361 166	10 717 456	999 590	586 650	5 700 000
2a	Accessions during year - Archives (metres)	3 722	6 077	972	102	121	0	3 032	2 692	1 825	3 797
2b	Accessions during year - Total (items)	372 200	960 166	153 576	16 116	22,947	0	479 056	141 483	9 125	484 389
3a	Disposal during the reporting period (metres)	98	0	0	0	0	0	0	0	2	0.1
3b	Disposal during the reporting period- Total (items)	9 800	0	0	0	0	0	0	0	69	18
4a	At end of year - Archives (metres)	362 936	65 919	88 337	5 281	17 701	14 859	70 864	42 977	13 556	93 425
4b	At end of year - Archives (items)	36 293 600	10 415 202	13 957 246	834 398	2 652 001	2 361 166	11 196 512	1 246 333	595 706	6 200 000
5	Method of calculation for item count	Shelf metres x 100	Shelf metres x 158	Shelf metres x 158	Shelf metres x 158	Shelf metres x 158	Shelf metres x 158	Shelf metres x 158	N/A	Shelf metres x 50	Non-textual items counted only
Arrangement and Description											
Number of accessions or consignments processed and / or documented											
6a	At the start of the reporting period	88 823	3 419	21 437	4 452	17 203	7 435	38 616	21 890	0	4 527
6b	At the end of the reporting period	90 647	3 586	21 672	4 600	17 725	7 450	39 273	21 975	0	4 610
Number of items listed											
7a	At the start of the reporting period	7 986 916	239 876	5 466 992	37 015	659 931	517 019	670 182	1 125 168	0	4 637 451
7b	At the end of the reporting period	9 066 272	269 832	5 615 522	70 238	676 810	615 450	759 246	1 275 515	0	5 121 840
Number of series registered / described											
8a	At the start of the reporting period	66 488	14 875	16 026	3 448	17 007	3 990	21 384	16 548	0	17 765
8b	At the end of the reporting period	66 756	14 941	16 119	3 647	17 519	4 150	21 749	16 640	0	27 690
Number of context entities registered / described											
9a	At the start of the reporting period	9 011	3 867	4 699	979	4 198	1 532	2 772	5 087	0	5 665
9b	At the end of the reporting period	9 065	3 887	4 710	1 042	4 336	1 588	2 859	5 011	0	6 116
1 042											
Proportion of archival records included in finding aids accessible to researchers (%)											
10a	At the start of the reporting period	98%	c. 99%	80%	95%	96%	98%	0	85%	0	80%
10b	At the end of the reporting period	98%	c. 99%	81%	95%	96%	98%	0	86%	0	78%

Reference services / Use of Holdings											
11a	Visits to search room during year	22 879	54 467	17 278	934	4 178	4 258	3 270	6 078	45	17 019
11b	Items made available in search room	58 171	26 831	48 294	20 624	7 494	9 853	8 794	16 084	199	57 964
12a	Number of enquiries (except records creators/owners)	75 474	10 805	17 595	706	4 151	7 269	4 150	16 026	142	12 114
12b	Number of archival records loaned to creators / owners other than in reading room or search room	32 086	2 091	10 716	770	1 888	1 676	8 444	2 421	10	5 776
Web Access											
13a	Number of 'hits' during reporting period	0	0	0	0	32 346 885	2 475 397	2 578 418	7 639 291	172 239	3 611 703
13b	Number of unique visits during reporting period	3 329 851	1 598 503	1 243 945	0	1 152 248	96 835	100 274	382 402	3 889	244 679
Information availability on web site											
14a	Creators / owners (Yes/No)	Yes	Yes	Yes	Yes	Yes	Yes	Yes	Yes	No	Yes
14b	Series (Yes/No)	Yes	Yes	Yes	Yes	Yes	Yes	Yes	Yes	No	Yes
15a	Items (includes indexes) (Yes/No)	Yes	Yes	Yes	No	Yes	Yes	Yes	Yes	No	Yes
15b	Digital copies (Yes/No)	Yes	Yes	Yes	No	Yes	Yes	No	Yes	No	Yes
Use of Holdings Percentage											
16a	Business Users	2%	10%	10%	6%	0	0	5%	12%	0	6%
16b	Research Users	99%	90%	90%	94%	0	0	95%	88%	100	94%
Repository buildings											
17a	Total storage area - start of year (m2)	41 525	17 550	11 876	1 185	2 000	1 785	5 053	12 650	3 000	16 088
17b	Total storage area - end of year (m2)	41 525	17 550	12 000	1 185	2 000	1 785	5 053	12 650	3 000	16 135
18a	Shelving capacity - start of year (metres)	443 783	143 600	112 010	7 054	18 651	14 600	75 000	93 000	249.6	142 895
18b	Shelving capacity - end of year (metres)	440 538	143 600	112 010	7 054	18,651	14 600	75 000	93 000	249.6	156 760
Staff											
19a	FTE positions filled - start of year	419.62	64.82	67.5	12	25	22	27.1	56	7	128
19b	FTE positions filled - end of year	441.24	61.28	76	13	25	22	27.1	57	7	147
Budget and Expenditure											
20a	Total expenditure during year (\$A)	\$72 053 000	\$8 680 819	\$12 168 466	\$1 483 000	\$3 088 000	\$2 200 796	\$4 623 480	\$13 788 000	\$942 671	\$23 888 000
20b	Does expenditure include accommodation (Yes/No)	Yes	Yes	Yes	No	Yes	No	Yes	Yes	Yes	Yes

Income											
21a	Recurrent / Operating (Yes/No)	Yes	Yes	Yes	Yes	Yes	Yes	Yes	Yes	Yes	Yes
21b	Proportion of funding (%)	69%	87%	72%	100%	99%	93%	97%	96%	100%	97%
22a	Capital / Building and equipment (Yes/No)	Yes	Yes	Yes	No	No	No	Yes	Yes	No	No
22b	Proportion of funding (%)	16%	5%	16%	0	0	0%	1%	3%	0%	0%
23a	Earnings (Yes/No)	Yes	Yes	Yes	No	Yes	Yes	Yes	Yes	No	Yes
23b	Proportion of funding (%)	13%	5%	4%	0	1%	7%	2%	1%	0%	3%
24a	Sponsorships (Yes/No)	Yes	No	Yes	No	No	No	No	No	No	No
24b	Proportion of funding (%)	0.82%	0%	0%	0	0	0%	0	0%	0%	0%
25a	Grants (Yes/No)	No	Yes	Yes	No	No	No	No	No	No	No
25b	Proportion in funding (%)	0%	3%	7%	0	0	0%	0	0%	0%	0%

Notes

State Records NSW

Q1, 4: This includes state archives stored outside State Records custody.

Q6b: These are registered consignments (draft and approved).

Q6-9: These figures record registrations in the current electronic system only. Accessions processed under the previous system will be brought forward into the current system as time permits.

Q10: Includes paper-based documentation.

Q11a: Includes 5,602 readers using original items.

Q12a: This figure is a total for the number of enquiries received by telephone and in writing only. State Records NSW does not keep statistics on the number of enquiries received in person in the reading rooms.

Public Record Office Victoria

Q1b: There were also 191,273 VERS encapsulated objects in addition to the total number of physical items recorded.

Q4b: There were also 244,995 VERS encapsulated objects in addition to the total number of physical items recorded.

Q12a: Statistics were not kept for enquiries received in person. This figure is derived from % of users in reading room plus telephone, correspondence and email enquiries. Figure is higher than in previous years due to change in recording methods.

Q13a: PROV's analytics application (Google Analytics) does not measure web site 'hits'.

Q13b: This figure represents total number of visits, not unique visits.

State Records of South Australia

Q7a: This quantity represents only those items listed electronically in State Records (SA) Archival Management System, ArchivesOne. The quantity of items listed in hardcopy is not available.

Q7b: This quantity represents only those items listed electronically in State Records (SA) Archival Management System, ArchivesOne. The quantity of items listed in hardcopy is not available.

Queensland State Archives

Q1a: Adjusted to reflect more accurate figures.

Q7a: Includes children.

Archives New Zealand

Q4b: Archway item count. This excludes items not listed individually such as photographic prints and negatives. Estimates have been made for these types of archives including 750 000 maps/plans, 500 000 prints and negatives and 1 000 000 other

|

														Variation 1996/2008	Percentage variation 1996/2008	Variation 2008/2009	Percentage variation 2008/2009
Holdings																	
	1996	1997	1998	1999	2000	2001	2002	2003	2004	2005	2006	2007	2008				
National	197363	217278	238254	249308	255895	292399	366193	264576	270399	276233	297249	300350	362,936	165,573	83.89%	62,586	20.84%
VIC	28233	32927	38567	40909	50448	45396	57739	82227	83547	84192	85355	86004	88,337	60,104	212.89%	2,333	2.71%
NSW	42516	43500	43892	44455	47105	58262	49655	53081	54591	57096	57667	58516	65,919	23,403	55.05%	7,403	12.65%
QLD	24211	24687	25647	26361	26639	34068	34556	34924	35083	35424	35909	36835	42,977	18,766	77.51%	6,142	16.67%
SA	0	0	15430	16575	0	40000	44969	50221	51650	53866	64415	66255	70,864	70,864	459.26%	4,609	6.96%
WA	9279	8335	8740	9033	9313	9831	10235	14674	14855	14855	14857	14859	14,859	5,580	60.14%	0	0.00%
TAS	0	15700	16143	16460	16990	15698	16002	16706	16784	17359	17449	17487	17,701	214	1.22%	214	1.22%
NT	3228	3244	3244	3326	3326	3326	3874	4306	4443	4529	4974	5116	5281	2,053	63.60%	165	3.23%
ACT									5100	5100	3897	3369	13,556	13,556	1.36%	10,187	302.37%
NZ	66624	64110	69369	70232	73173	0	77500	79068	82214	83864	85481	86819	93,425	26,801	40.23%	6,606	7.61%
TOTAL	371454	409781	459286	476659	482889	498980	660723	599783	618666	632518	667253	675610	760,996	389,542	104.87%	85,386	12.64%

														Variation 1996/2008	Percentage variation 1996/2008	Variation 2008/2009	Percentage variation 2008/2009
Reference Services																	
<i>Items Made Available</i>																	
	1996	1997	1998	1999	2000	2001	2002	2003	2004	2005	2006	2007	2008				
National	62167	61706	68443	71783	68228	57827	62684	49449	55003	57892	51851	50724	58,171	-3,996	-6.43%	7,447	14.68%
VIC	49615	50210	49569	48962	53662	60571	57598	57604	53370	46796	49906	49633	48,294	-1,321	-2.66%	-1,339	-2.70%
NSW	107985	104516	99248	89156	22115	24335	21516	30834	25725	28232	28090	25640	26,831	-81,154	-75.15%	1,191	4.65%
QLD	27326	27634	27730	21762	32612	31179	30700	26940	35483	28285	33349	31504	16,084	-11,242	-41.14%	-15,420	-48.95%
SA	17674	18561	16677	19271	0	15468	10690	16313	5000	6414	6845	8062	8,794	-8,880	-50.24%	732	9.08%
WA	19961	17495	18021	20154	19248	9788	8901	8972	7835	6874	7380	6962	9 853	-10,108	-50.64%	2,891	41.53%
TAS	28745	27500	26350	27000	27000	29500	28820	29500	30400	27100	18869	27519	7,494	-21,251	-73.93%	-20,025	-72.77%
NT	5129	3818	8871	8776	3600	10321	29376	16222	50856	31820	43653	48957	20,624	15,495	302.11%	-28,333	-57.87%
ACT								0	0	0	0	0	199	199	100.00%	199	-137.38%
NZ	54947	54883	53678	51442	53454	0	48893	51096	51772	51016	50149	55771	57,964	3,017	5.49%	2,193	3.93%
TOTAL	373549	366323	368587	358306	279919	238989	299178	286930	315444	284429	290092	304772	244,455	-129,094	-34.56%	-60,317	-19.79%

														Variation 1996/2008	Percentage variation 1996/2008	Variation 2008/2009	Percentage variation 2008/2009
Reference Services																	
<i>Visits To Search Room</i>																	
	1996	1997	1998	1999	2000	2001	2002	2003	2004	2005	2006	2007	2008				
National	14120	16022	16149	25313	24574	24815	24392	24090	25332	22660	22040	20967	22,879	8,759	62.03%	1,912	9.12%
VIC	29799	27614	25951	23633	22315	22633	23194	21815	19461	19175	18648	17083	17,278	-12,521	-42.02%	195	1.14%
NSW	16595	15121	14488	14078	12401	4117	3966	5333	5544	5959	57615	61405	54,467	37,872	228.21%	-6,938	-11.30%
QLD	9158	9815	9470	9892	9697	9433	8768	8842	8842	8255	6845	6856	6,078	-3,080	-33.63%	-778	-11.35%
SA	3802	3551	3499	3687	N/A	4291	3811	3441	2060	1996	2513	2796	3,270	-532	-13.99%	474	16.95%
WA	8662	8997	9566	8260	8676	5536	5917	5384	4265	3657	3429	3562	4,258	-4,404	-50.84%	696	19.54%
TAS	10450	10340	10670	10560	10998	10900	10629	10300	9950	9240	7715	7792	4,178	-6,272	-60.02%	-3,614	-46.38%
NT	608	500	539	582	610	676	843	748	804	760	1010	907	934	326	53.62%	27	2.98%
ACT								0	0	0	0	0	45	45	0.00%	45	0.00%
NZ	18137	17331	17118	18527	19463	N/A	15256	16724	16630	15178	15801	16619	17,019	-1,118	-6.16%	400	2.41%
TOTAL	111331	109291	107450	114532	108734	82401	96776	96677	92888	86880	135616	137987	126,148	14,817	13.31%	-11,839	-8.58%

														Variation 1996/2008	Percentage variation 1996/2008	Variation 2008/2009	Percentage variation 2008/2009
Reference Services																	
<i>Enquiries Recorded</i>																	
	1996	1997	1998	1999	2000	2001	2002	2003	2004	2005	2006	2007	2008				
National	41621	46400	49852	70293	73846	72991	115877	147790	134866	142897	116953	103362	75,474	33,853	81.34%	-27,888	-26.98%
VIC	0	58577	59287	50536	47578	47042	54431	55319	53621	47016	18148	17732	17,595	17,595	0.00%	-137	-0.77%
NSW	7984	9099	7739	10429	10752	10803	11688	13000	9788	9400	9554	10928	10,805	2,821	35.33%	-123	-1.13%
QLD	10251	21292	4400	16101	20502	3953	2891	21447	21447	22782	19324	20893	16,026	5,775	56.34%	-4,867	-23.29%
SA	14209	15123	15768	5306	0	6690	7077	0	4800	1645	1542	1478	4,150	-10,059	-70.79%	2,672	180.78%
WA	8665	9948	10743	11391	12104	12720	10734	9635	7435	7197	8863	6540	7,269	-1,396	-16.11%	729	11.15%
TAS	1900	1870	2556	3068	3630	4500	2664	2721	2790	2640	2822	2894	4,151	2,251	118.47%	1,257	43.43%
NT	98	103	87	689	453	119	333	426	441	452	665	633	706	608	620.41%	73	11.53%
ACT								0	0	0	0	0	0	0	0.00%	0	0.00%
NZ	4647	4675	5420	7542	16824	N/A	30953	30701	32117	30551	9547	11249	12,114	7,467	160.68%	865	7.69%
TOTAL	89375	167087	155852	175355	185689	158818	236648	281039	267305	264580	187418	175709	141,021	51,646	57.79%	-34,688	-19.74%

														Variation 1996/2008	Percentage variation 1996/2008	Variation 2008/2009	Percentage variation 2008/2009
Staff																	
	1996	1997	1998	1999	2000	2001	2002	2003	2004	2005	2006	2007	2008				
National	371.0	344.0	336.0	315.0	335.0	325.0	368.0	419.0	421.5	447.0	402.0	397.0	441.2	70.2	18.93%	44.2	11.14%
VIC	42.0	43.0	43.0	43.0	69.0	57.0	55.1	51.0	52.7	53.0	58.7	60.0	76.0	34.0	80.95%	16.0	26.67%
NSW	88.0	95.0	99.0	105.0	105.0	105.0	60+	54.0	54.7	55.8	60.4	61.9	61.3	-26.7	-30.36%	-0.6	-1.00%
QLD	58.0	61.0	53.0	40.0	52.0	34.0	34.0	42.0	41.0	51.0	46.0	47.0	57.0	-1.0	-1.72%	10.0	21.28%
SA	24.0	21.0	23.0	28.0	N/A	33.0	35.8	41.9	36.7	42.6	41.3	40.8	27.1	3.1	12.92%	-13.7	-33.58%
WA	15.0	16.0	16.0	16.0	16.0	16.0	16.5	18.9	20.0	20.0	10.0	10.0	22.0	7.0	46.67%	12.0	120.00%
TAS	25.0	25.0	25.0	25.0	25.0	25.0	25.0	25.0	25.0	25.0	25.0	25.0	25.0	0.0	0.00%	0.0	0.00%
NT	9.0	9.0	9.0	9.0	13.0	13.0	13.0	14.0	17.0	20.0	19.0	20.0	13.0	4.0	44.44%	-7.0	-35.00%
ACT								2.0	5.0	6.0	6.0	6.0	7.0	7.0	350.00%	1.0	16.67%
NZ	73.5	71.8	69.7	68.5	70.0	N/A	96.0	107.0	112.0	117.0	100.0	109.0	147.0	73.5	100.00%	38.0	34.86%
TOTAL	705.5	685.8	673.7	649.5	685	608	643.4	774.8	785.6	837.4	768.4	776.7	876.62	171.1	24.26%	99.9	12.86%

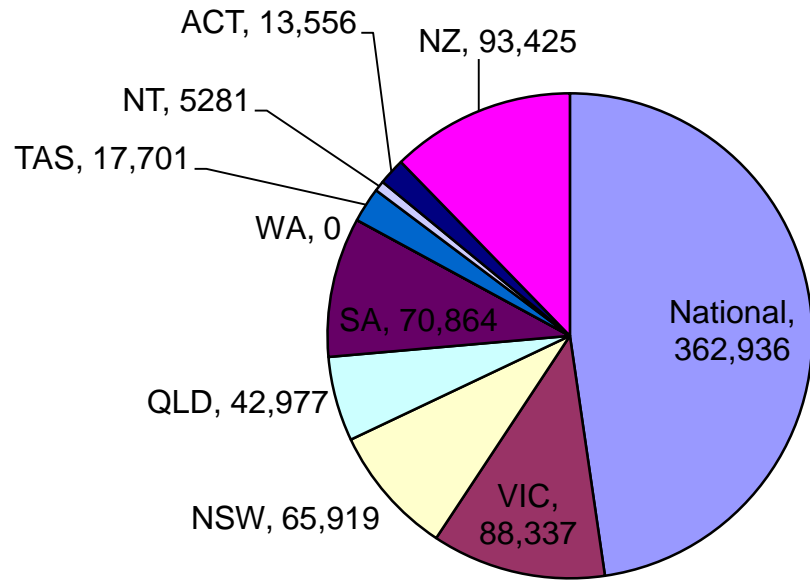
									Variation 2001/2008	Percentage variation 2001/2008	Variation 2008/2009	Percentage variation 2008/2009
Web Access												
<i>Hits*</i>												
	2001	2002	2003	2004	2005	2006	2007	2008				
National	2897900	38600000	59382836	92678966	105751748	0	0	0	-2897900	0	0.0	0.00%
VIC	627600	10322161	15015873	7168286	7494500	0	0	0	-627600	0	0.0	0.00%
NSW	473704	596334	0	14300105	18131817	23516200	21827453	0	-473704	0.00%	-21827453	0.00%
QLD	9852	65484	920569	2006828	4284437	4781244	5453576	7,639,291	7,629,439	77440.51%	2,185,715.0	40.08%
SA	165946	75126	73328	0	0	5355292	3840538	2,578,418	2,412,472	1453.77%	-1,262,120.0	-32.86%
WA	0	0	361008	463679	545112	0	2437681	2 475 397	2,457,397	0.00%	19,716.0	1.50%
TAS	850000	2220000	2668844	2157280	3110359	4946372	13179754	32,346,885	31,496,885	3705.52%	19,167,131.0	145.43%
NT	0	0	0	0	0	0	0	0	0	0.00%	0.0	0.00%
ACT			0	0	0	0	0	172239	172,239	0.00%	0.0	0.00%
NZ	N/A	1122299	1047612	181840	0	0	8221	3,611,703	3,611,703	0.00%	3,603,482.0	43832.65%
TOTAL	5025002	53001404	79470070	118956984	139317973	38599108	46747223	46,348,536	43,780,931	82600%	-398,687.0	-0.85%

									Variation 2001/2008	Percentage variation 2001/2008	Variation 2008/2009	Percentage variation 2008/2009
Web Access												
<i>Unique visits*</i>												
	2001	2002	2003	2004	2005	2006	2007	2008				
National	581072	2190329	3011606	4725177	5895999	4060445	5541789	3,329,851	2,748,779	473.05%	-2,211,938.0	-39.91%
VIC	218600	282000	322061	364332	43900	460012	588760	1,243,945	1,025,345	469.05%	655,185.0	111.28%
NSW	0	0	903645	1039248	1376324	1513126	976382	1,598,503	1,598,503	0.00%	622,121.0	63.71%
QLD	25956	53460	30444	75089	102106	141865	328613	382,402	356,446	1373.27%	53,789.0	16.37%
SA	11122	24575	7775	0	0	117460	80877	100,274	89,152	801.58%	19,397.0	23.98%
WA	0	0	35137	53504	119134	0	84025	96 835	100 274	0.00%	12,810.0	15.24%
TAS	164000	279600	0	0	141484	0	0	1,152,248	988,248	602.00%	1,152,248	0.00%
NT	0	0	0	0	0	0	0	0	0	0.00%	0.0	0.00%
ACT			0	0	0	0	0	3889	3889	0.00%	3889	0.00%
NZ	0	73612	132 256	92906	0	0	5005	244,679	244,679	0.00%	239,674.0	4788.00%
TOTAL	1000750	2903576	4310668	6350256	7678947	6292909	7605451	8,055,791	7,055,041	704.98%	450,340.0	5.92%

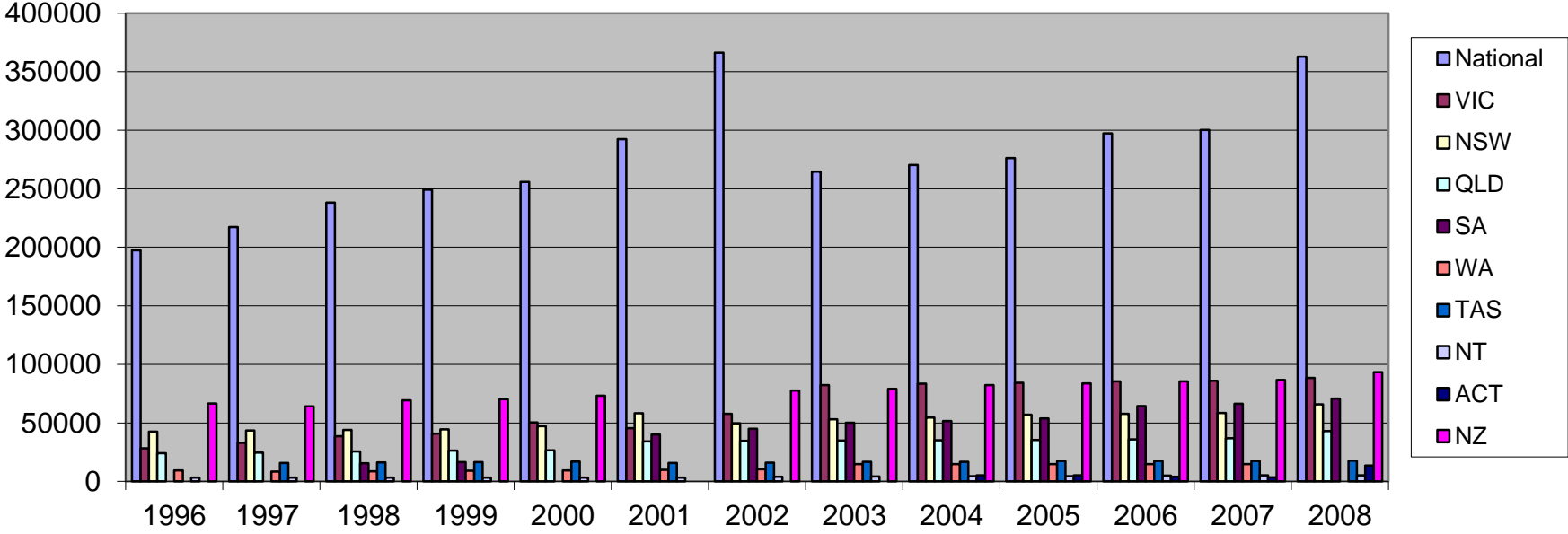
														Variation 1996/2008	Percentage variation 1996/2008	Variation 2008/2009	Percentage variation 2008/2009
Repository Building																	
<i>Total Storage Area</i>																	
	1996	1997	1998	1999	2000	2001	2002	2003	2004	2005	2006	2007	2008				
National	74999	74999	71288	69031	54816	75073	72068	46258	40706	40396	41525	41525	41,525	-33,474	-44.63%	0	0.00%
VIC	N/A	N/A	10000	10000	10000	10000	9444	9444	11876	11876	11876	11876	12,000	0	0.00%	124	1.04%
NSW	18586	19586	27000	27000	10000	19370	17550	17550	17550	17550	17550	17550	17,550	-1,036	-5.57%	0	0.00%
QLD	5698	5698	6260	6260	6260	6260	6260	6260	6260	6260	6260	6260	12,650	6,952	122.01%	6,390	102.08%
SA	3720	3720	4210	5048	N/A	6778	6778	6778	6778	5053	5053	5053	5,053	1,333	35.83%	0	0.00%
WA	2585	2585	2585	2585	2585	1785	1785	1785	1785	1785	1785	1785	1 785		0.00%		0.00%
TAS	2000	2000	2000	2000	2000	2000	2000	2000	2000	2000	2000	2000	2,000	0	0.00%	0	0.00%
NT	1000	1000	1000	1000	1000	1121	1121	1121	1142	1142	1185	1185	1,185	185	18.50%	0	0.00%
ACT								0	0	0	0	0	3000	3,000	0.00%	3,000	0.00%
NZ	N/A	5000	5000	6681	10456	N/A	10456	10456	10456	10456	10340	10340	16,135	11,135	222.70%	5,795	56.04%
TOTAL	108588	114588	129343	129605	97117	122387	127462	101652	98553	96136	97574	97574	111,098	2,510	2.31%	13,524	13.86%

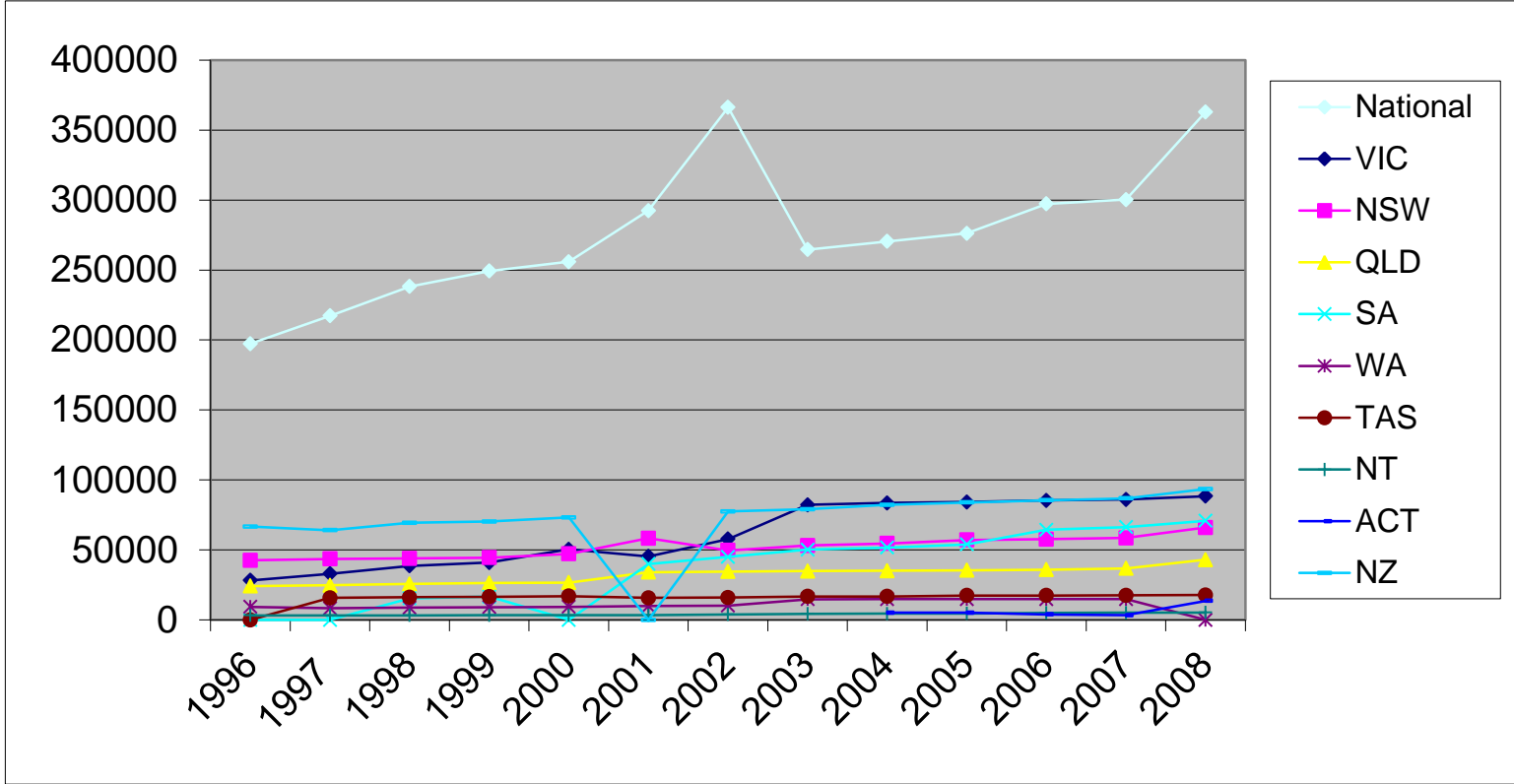
															Variation 1996/2008	Percentage variation 1996/2008	Variation 2008/2009	Percentage variation 2008/2009	
Holdings																			
	1996	1997	1998	1999	2000	2001	2002	2003	2004	2005	2006	2007	2008	Staff	Sm/staff				
National	197363	217278	238254	249308	255895	292399	366193	264576	270399	276233	297249	300350	362,936	441	823	165,573	83.89%	62,586	20.84%
VIC	28233	32927	38567	40909	50448	45396	57739	82227	83547	84192	85355	86004	88,337	76	1,162	60,104	212.89%	2,333	2.71%
NSW	42516	43500	43892	44455	47105	58262	49655	53081	54591	57096	57667	58516	65,919	61	1,076	23,403	55.05%	7,403	12.65%
QLD	24211	24687	25647	26361	26639	34068	34556	34924	35083	35424	35909	36835	42,977	57	754	18,766	77.51%	6,142	16.67%
SA	N/A	N/A	15430	16575	0	40000	44969	50221	51650	53866	64415	66255	70,864	27	2,615	0	0.00%	4,609	6.96%
WA	9279	8335	8740	9033	9313	9831	10235	14674	14855	14855	14857	14859	14,859	22	675	5,580	60.14%	0	0.00%
TAS	N/A	15700	16143	16460	16990	15698	16002	16706	16784	17359	17449	17487	17,701	25	708	0	0.00%	214	1.22%
NT	3228	3244	3244	3326	3326	3326	3874	4306	4443	4529	4974	5116	5281	13	406	2,053	63.60%	165	3.23%
ACT									5100	5100	3897	3369	13,556	7	1,937	13,556	#DIV/0!	10,187	302.37%
NZ	66624	64110	69369	70232	73173	0	77500	79068	82214	83864	85481	86819	93,425	147	636	26,801	40.23%	6,606	7.61%
TOTAL	371454	409781	459286	476659	482889	498980	660723	599783	618666	632518	667253	675610	760,996	877	868	389,542	104.87%	85,386	12.64%

Holdings 2008

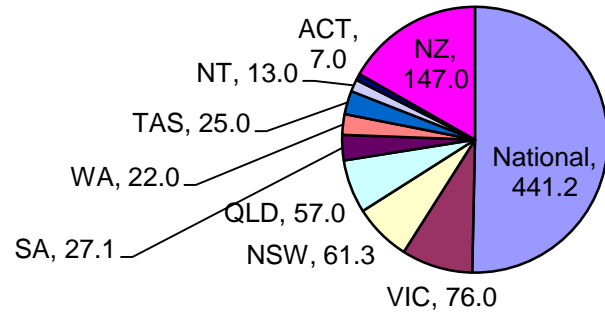


Holdings 1996-2008





Staff



Staffing 2008

